

EXCELSYS
XF MODEL
MIL-STD 810-G
THERMAL / VIBRATION
REPORT.

Issue 001-A. September 2012

PERITUS POWER

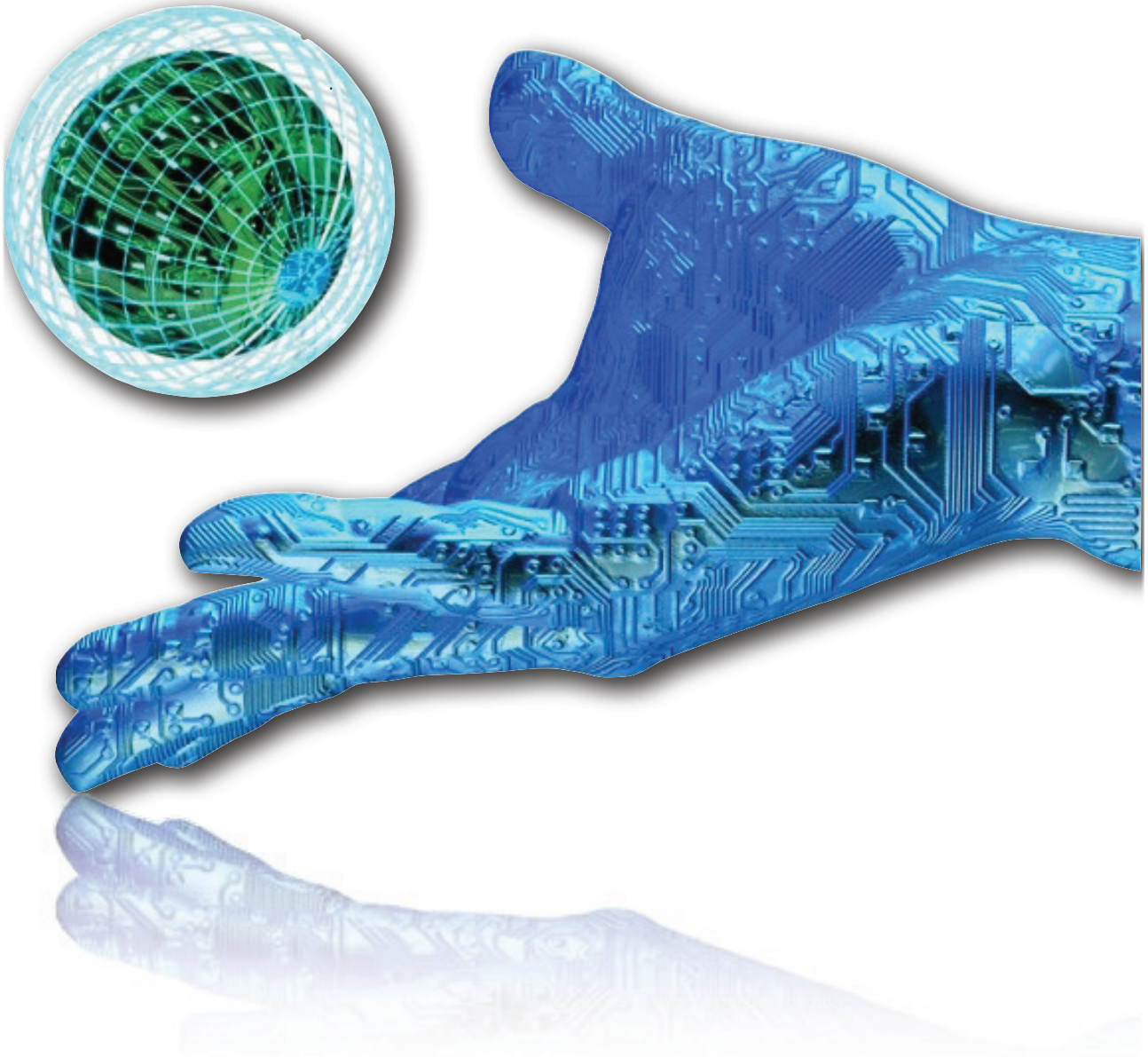


Table Of Contents.

1.0 Scope	3
1.1 Test Equipment	4
1.2 Test Set Up	4
2.0 Thermal Criteria for Real Life Conditions.	5
2.1 Thermal Unit Set Up	6
2.2 Thermal Profiles.	7
2.3 Thermal Shock.	8
2.4 Thermal Test Results 115V 50Hz	9
2.5 Thermal Test Results 230V 50Hz	10
2.6 Thermal Test Results 115V 400Hz	11
2.7 Derating Curves 60°C to 70°C.	12
3.0 Vibration Mil-Std. 810G Method 514.6.	13
3.1 Test 1. Category 4 Common carrier (US highway truck vibration exposure).	13
3.2 Test 2. Category 4 Composite 2 wheeled trailer vibration exposure.	14
3.3 Test 3. Category 4 Composite wheeled vehicle vibration exposure.	15
3.4 Test 4a. Category 7 Jet aircraft cargo vibration exposure.	16
3.5 Test 4b. Category 7 Jet aircraft vibration exposure. (General Exposure)	16
3.6 Test 5. Category 9 Helicopter vibration exposure. (General Exposure)	17
3.7 Test 6. General minimum integrity exposure.	18
4.0 Environmental Test Summaries.	19
4.1 Thermal Tests.	19
4.2 Thermal Conclusions.	19
4.3 Vibration Tests.	20
4.4 Vibration Conclusions.	20

1.0 Scope

This document details the final test results and procedures carried out on the XF Model according to Military Standard-810G (2008) which superseded Military Standard-810F (2000).

The XF Model was tested to both thermal environmental tests and vibration tests according to MIL STD 810G.

The purpose of the test is to verify the product is compliant for rugged environments. The unit makes use of conformal coating, anti-vibration compound and all fixings make use of Loctite.

This test document contains test data for low line and high line 50 Hz operation across a -55°C to +70°C temperature range, and a 115VAC 400 Hz test.

The XF Model as tested is detailed in Table 1 below;

Table 1 details PowerMod positions.

PowerPac used in test = XFC 323455-S01

Table 1

Slot	Output Voltage V	Output Current I	Output Power P(W)
XG3 Slot A	12	20	240
XG2 Slot B	5	32	160
XG3 Slot C	12	20	240
XG4 Slot D	24	5	120
XG5 Slot E	48	2.5	120
XG5 Slot F	24	5	120
		Total	1000